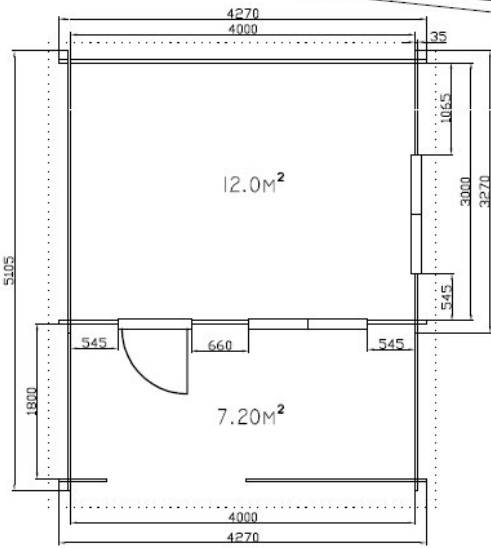
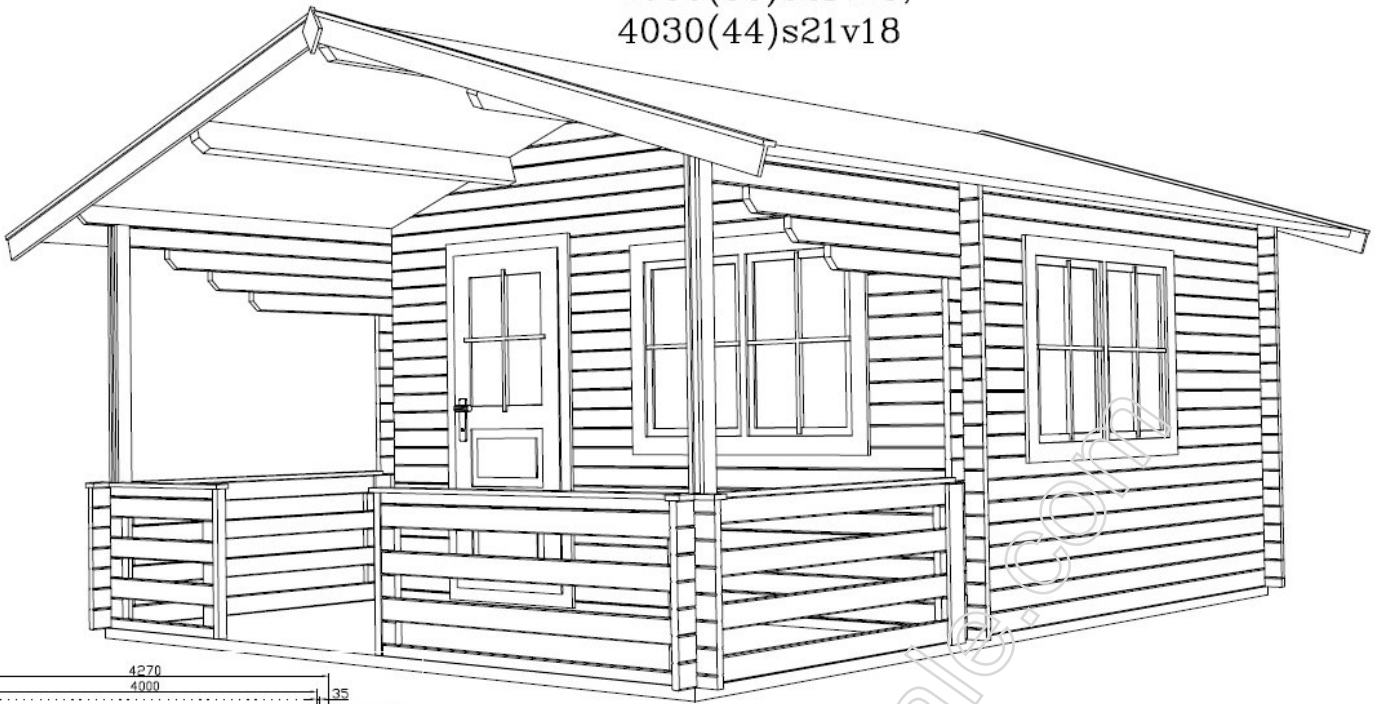


4030(35)s21v18,  
4030(44)s21v18



Garden house 4,00\*3,00 m + roof 2,10m + veranda 1.80m. Wall thickness 35, 44mm with double plank profile from pine or fir wood. All wooden constructions are dried until 10–12%, without painting and impregnation. Door with glass and lock, windows with glass with simple opening system.

Other technical data:

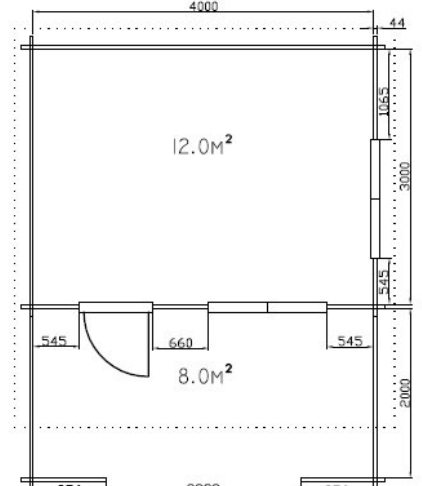
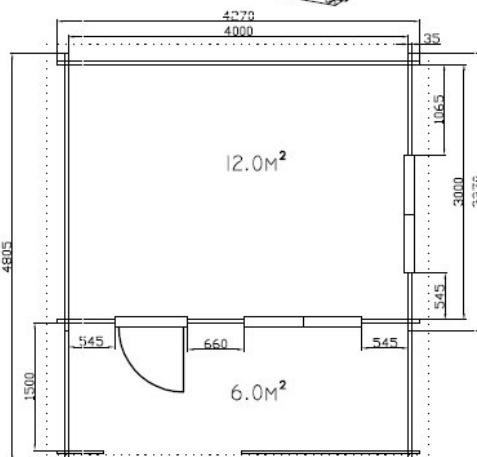
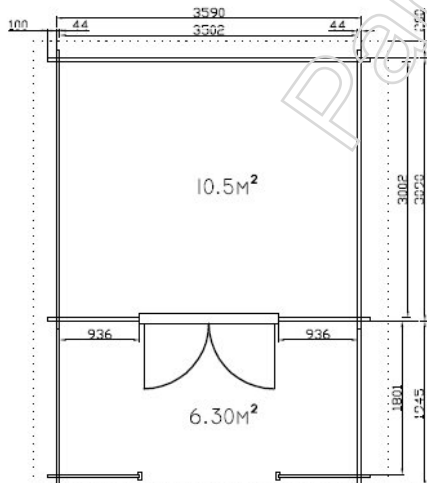
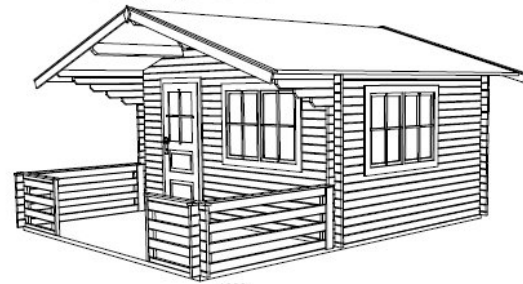
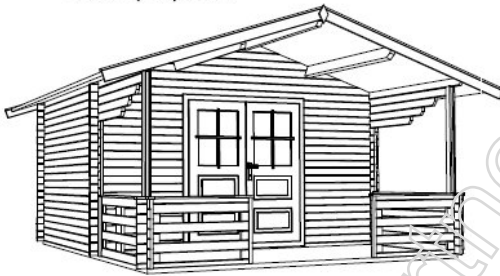
- floor planks 22mm
- underground 100\*40, 50\*40mm
- roof planks 19mm
- rafter 140\*60mm

Wall height: 2.10m  
House height: 2.77m

Other modifications:  
3530(44)Lv18

4030(35)v15  
4030(44)v15

4030(35)s14v20  
4030(44)s14v20



Garden house 3,50\*3,00 m + roof 1.95m, veranda 1,80m. Height 2.7m

Garden house 4,00\*3,00 m + roof and veranda 1,50m

Garden house 4,00\*3,00 m + roof 1,4m and veranda 2,00m