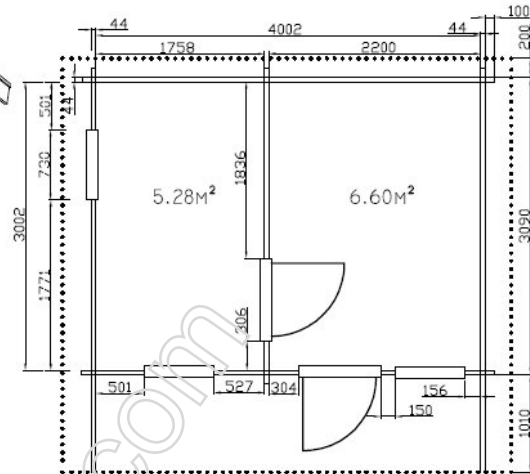
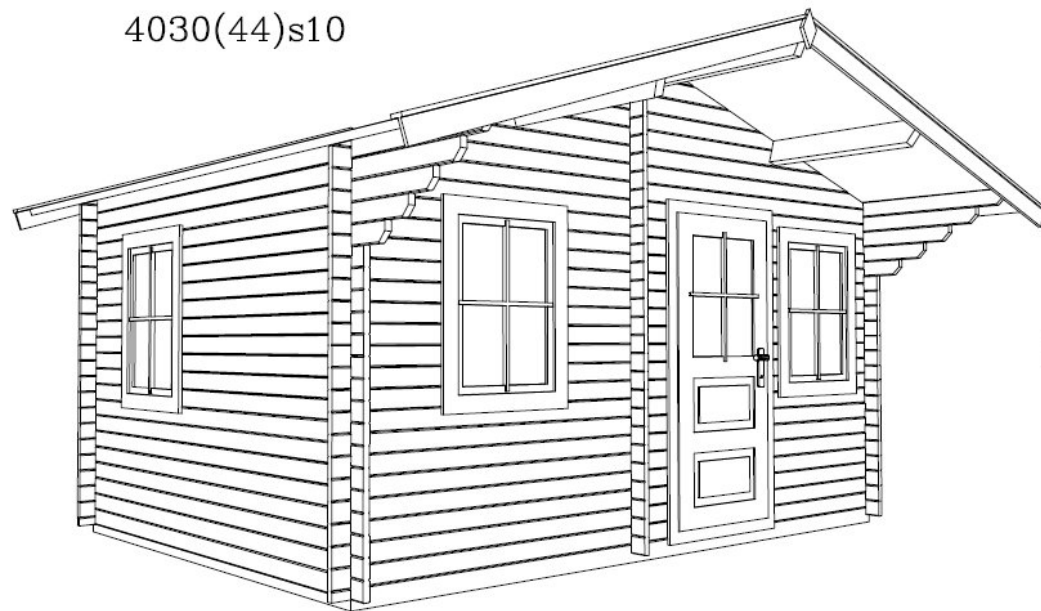


4030(44)s10



Garden house 4,00*3,00m(12m²) + roof 1,00m . Wall thickness 44mm with double plank profile from pine or fir wood.

All wooden constructions are dried until 10–12%, without painting and impregnation.

Door with glass packet and lock, windows with glass packet and simple opening system. Double roof.

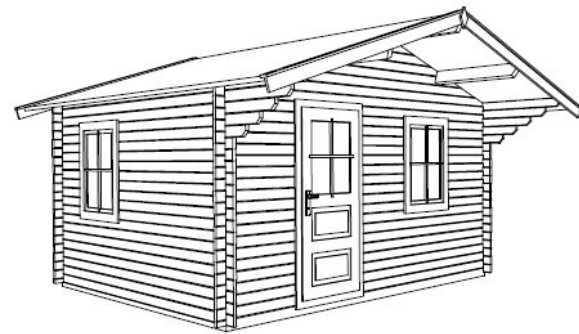
Other technical data:

- floor planks 22mm
- underground 100*35, 50*35mm
- roof planks 19+19mm
- rafter 140*60mm

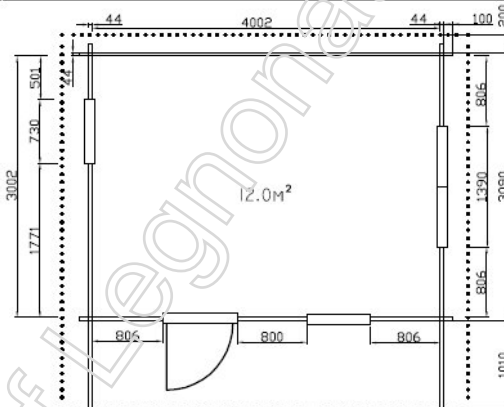
Wall height: 2.13m
House height: 2,78m

Other modifications:

4030(44)s10 Fextral



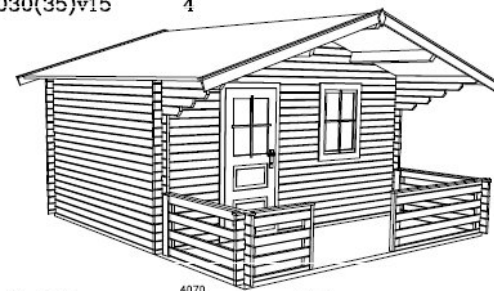
4030(44)s10 2



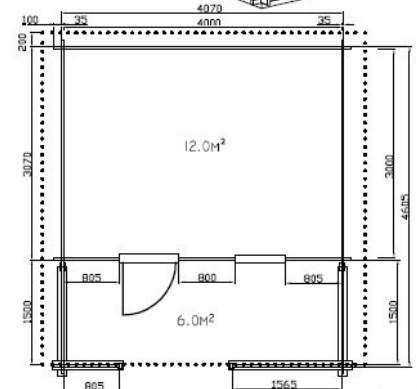
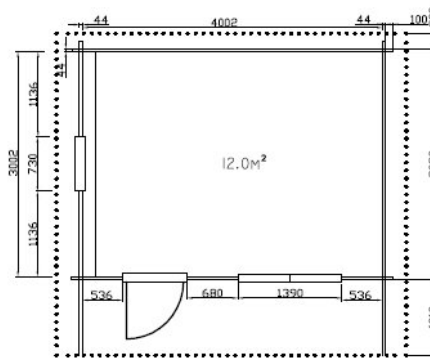
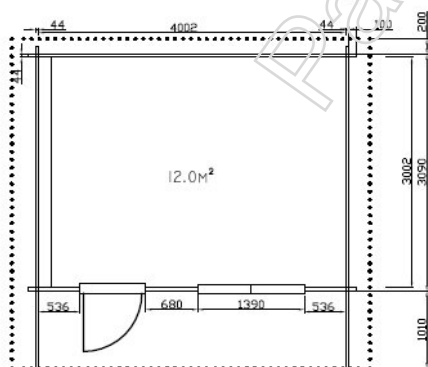
4030(44)s10 3

Garden house
4,00*3,00m(12m²) + roof
1,00m. Double roof.

Wall height: 2.13m
House height: 2,78m



4030(35)v15 4



Garden house 4,00*3,00m(12m²) + roof 1,00m. Double roof.

Garden house 4,00*3,00m(12m²) + roof 1,00m. Double roof.

Garden house 4,00*3,00m(12m²) + veranda(6m²) and roof 1,50m. Door and window with glass, single roof.

Wall height: 2.13m
House height: 2,78m

Wall height: 2.13m
House height: 2,78m

Wall height: 2.10m
House height: 2,77m