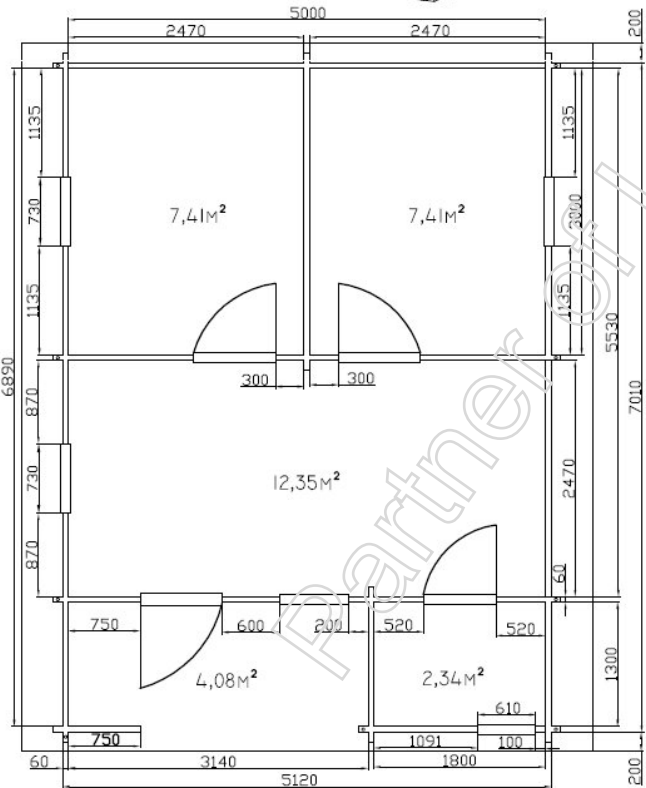
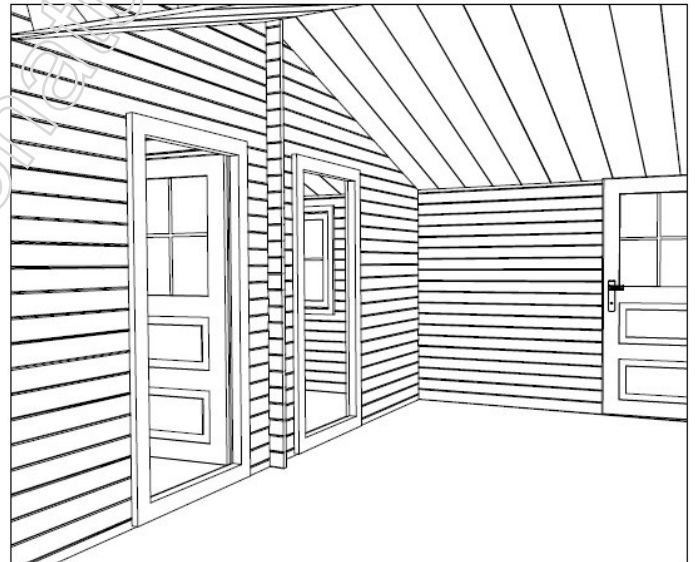
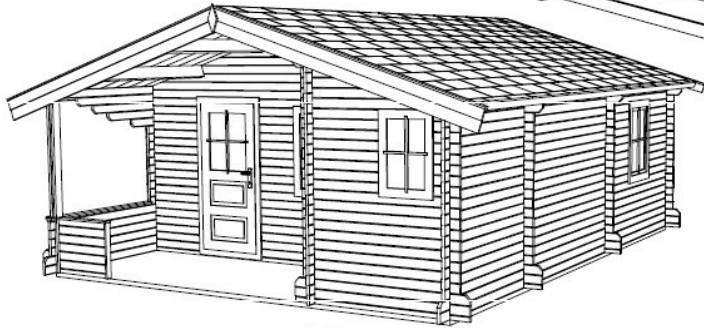
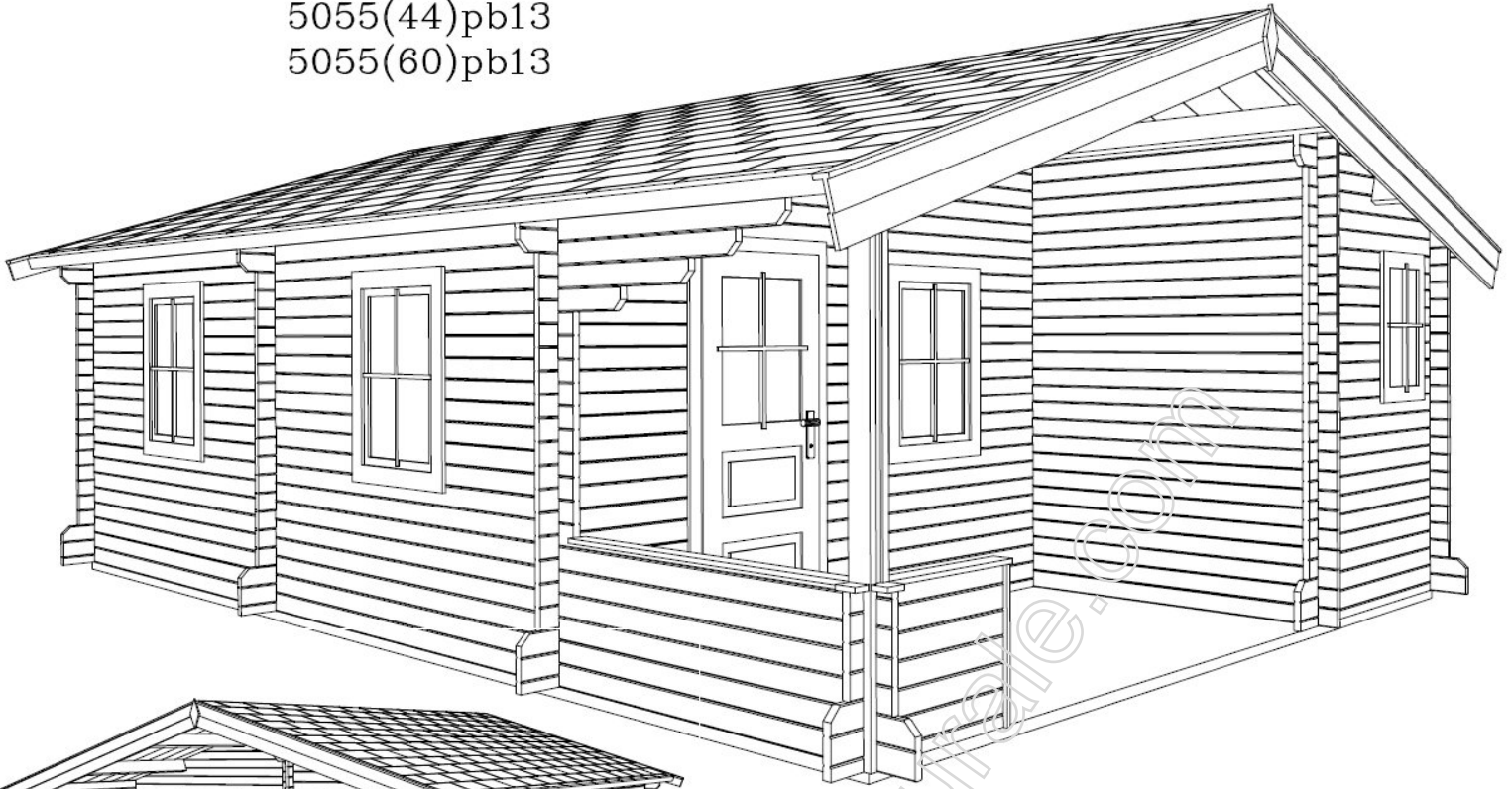
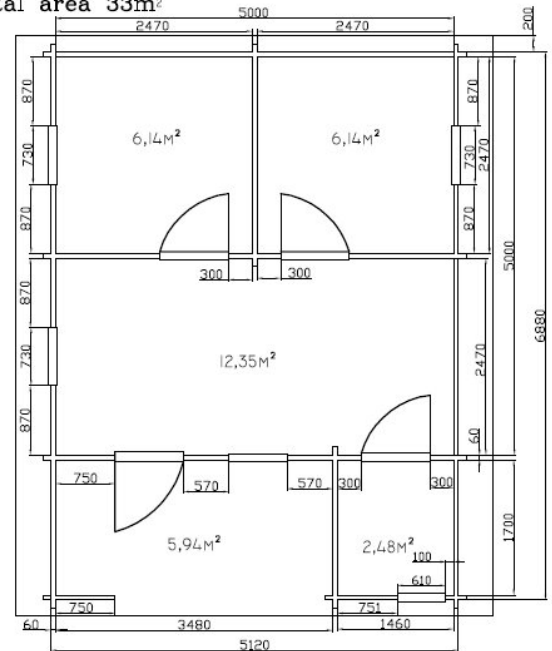


5055(44)pb13

5055(60)pb13



Other modifications:
NB5050(60)pb17-3
Total area 33m²



Wall thickness 44 or 60mm, outside door with glass packet(60mm), internal doors with glass, windows with glass packet(60mm). Internal dimensions: 5.00*5.53m + annex 1.80*1.30m. Double roof. Total area 34m². Houses with double plank profile, made from pine or fire wood, dried until 10-12% humidity, without any painting and impregnation.

- floor planks 22mm,
- ground 70*60mm
- roof planks 19+19mm,
- rafter 190*60mm

Wall height 2.50m
All height 3.32m