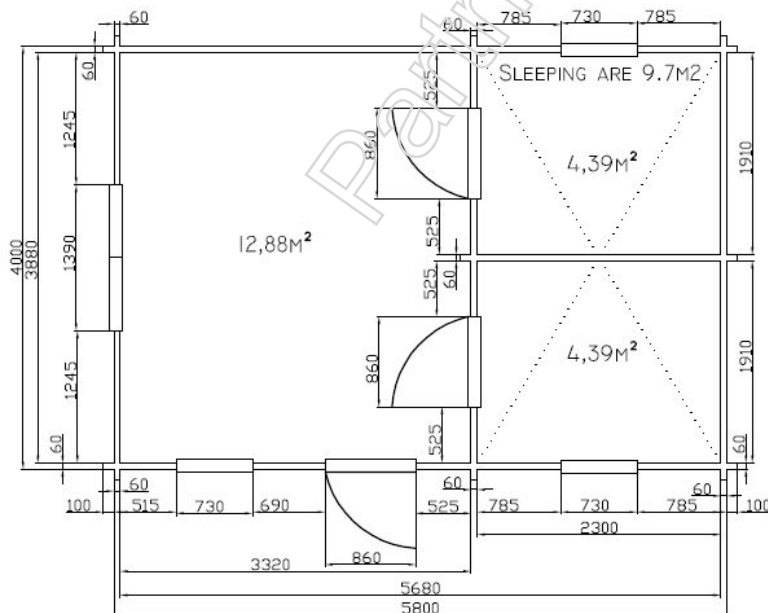
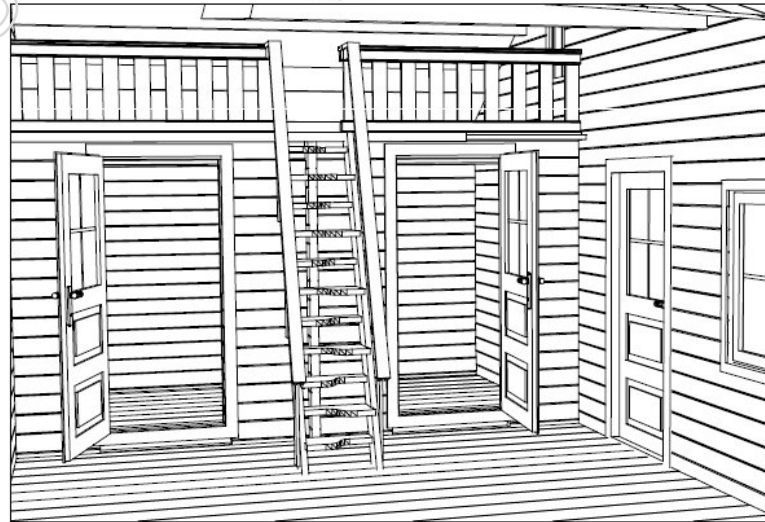
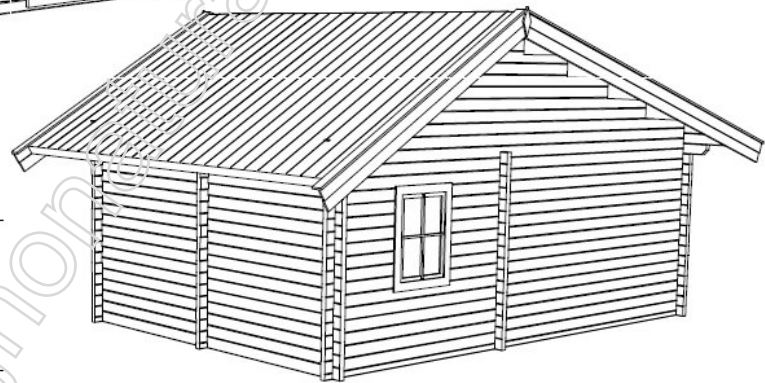
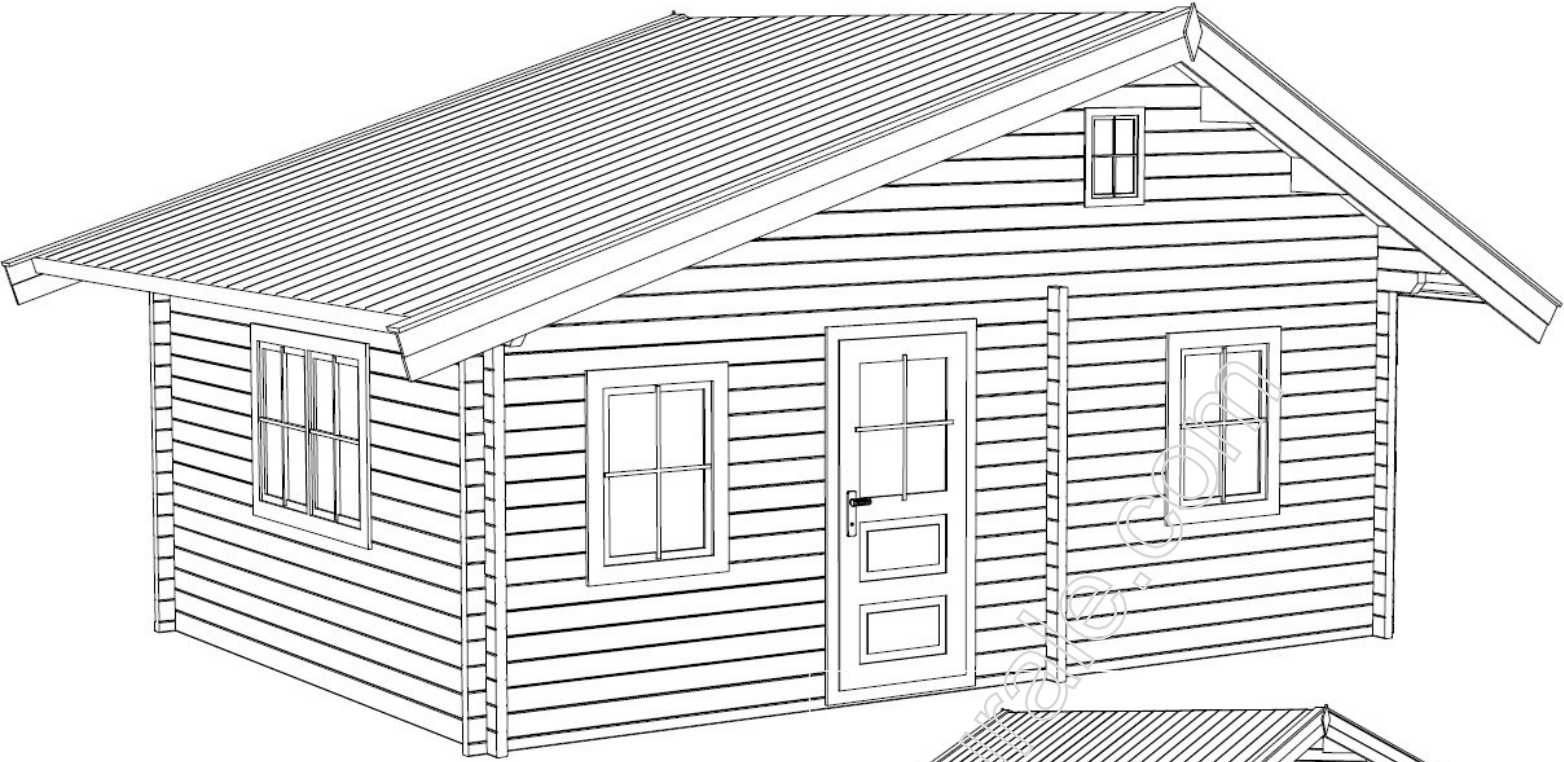


5739(60), 5739 (70)



Garden house 5.70*3.90 m + roof 0.56 m, wall thickness 60 and 70mm, made from pine or fir tree wood, dried until 10–12% humidity, with double plank profile, without any painting and impregnation. 3 single windows with glass packet, 1 double window and 1 little with glass packet, 3 doors.

Other technical data:

- floor planks 22 mm
 - underground 140*60, 70*60 mm
 - roof planks 19 mm
 - rafter 60*180 mm
 - sleeping place 2490*3880 mm
- First floor 22m², second floor 9.7m². Area 31.7m²